

SPB Cable Tray System

SPB cable trays are available in two distinct variants.

The first, SPBE is a simplified version with side heights of 20 or 40 mm specifically designed for tubing and light electrical installations. A comprehensive range of accessories and specialised fittings fully complements the range.

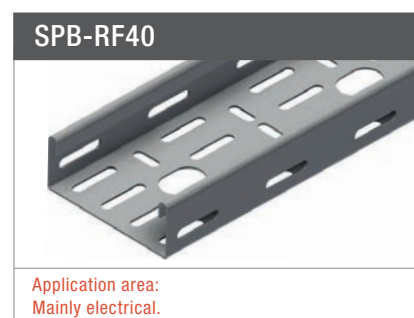
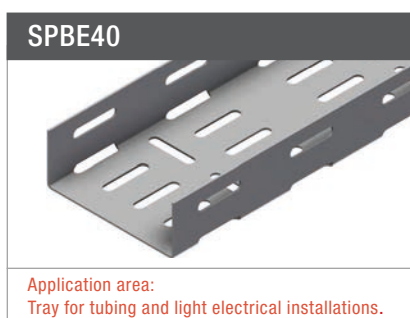
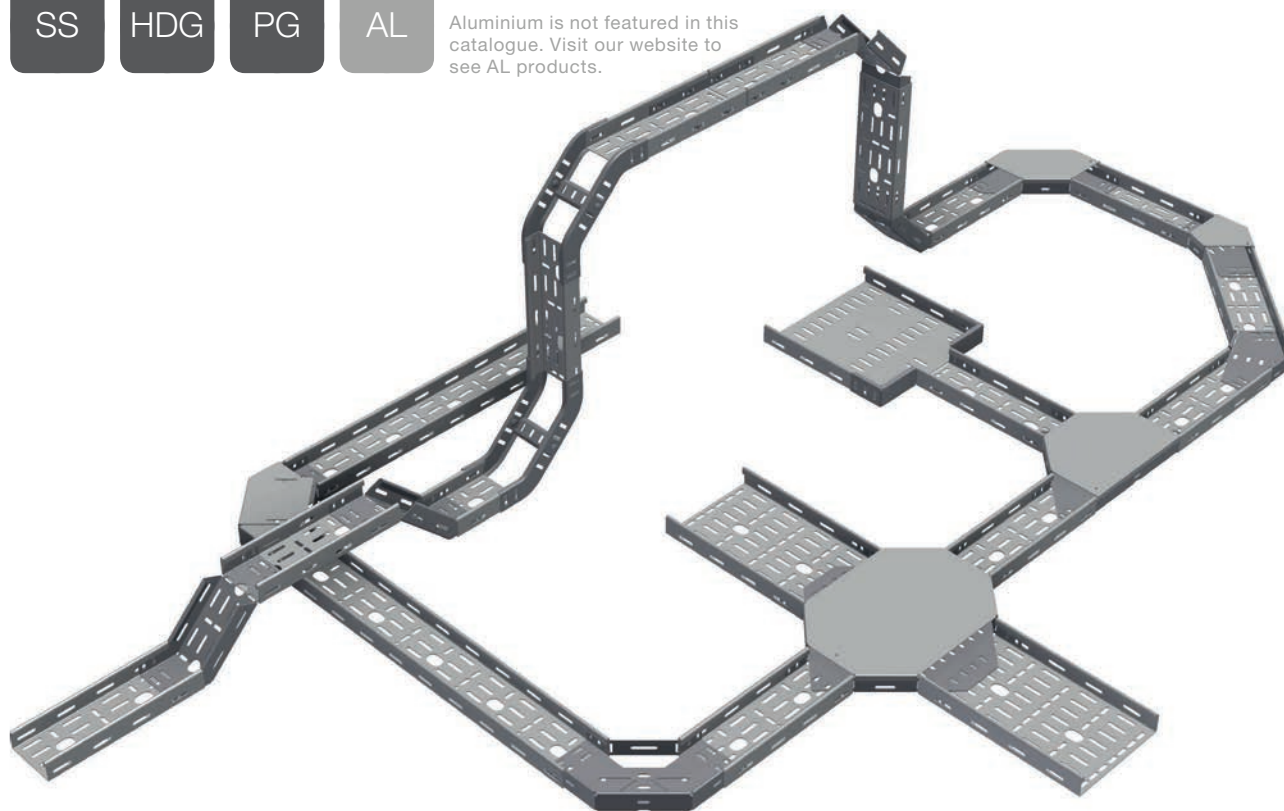
The other variant SPB-RF, has a return flange on the sides and is designed with no sharp edges. They are available in 40 and 60 mm heights. Contact us for details on 60 mm height range. Other heights may be available on request.

Our unique range of cost and labour saving tubing adapters, ETIN™ and INKO®, fit the entire range of cable trays. Both designs of Cable Trays feature slot patterns allowing for optimal and efficient positioning of equipment and easy access for Cable Ties and other fixings.

AVAILABLE MATERIALS



Aluminium is not featured in this catalogue. Visit our website to see AL products.



CABLE TRAY DATA

SPB Cable Tray Systems		Rail Height (mm)	Load 1.5 m support spacing (SS/HDG kg/m)	Load 2 m support spacing (SS/HDG kg/m)	Load 2.5 m support spacing (SS/HDG kg/m)	Load 3 m support spacing (SS/HDG kg/m)	Material thickness SS/HDG (mm)
SPBE 20	Tray for tubing	20	40/60	12/25	-	-	1.5/2.0
SPBE 40	Tray for tubing and light electrical installations	40	-	58	32	22	1.5/1.5 ¹ or 2.0 ²
SPB-RF 40	Mainly electrical	40	-	165/140 ³ or 226 ⁴	101/70 ³ or 137 ⁴	67/50 ³ or 102 ⁴	1.5/1.5 ³ or 2.0 ⁴

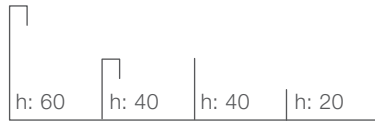
¹ Widths from 50-100 mm. ² Widths from 150-400 mm. ³ Widths from 50-200 mm. ⁴ Widths from 300-600

Loading data according to IEC61537. The length of the end span must be reduced to 3/4 of the support spacing.

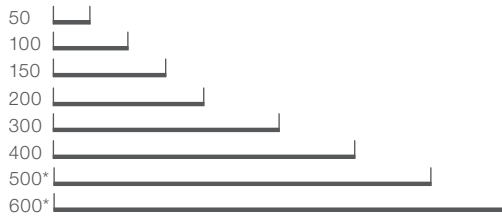
TRAY DESIGN

Different heights (mm):

Different tray heights to give more choice for loading space availability. Return flange for increased load capability.



Available widths (mm):



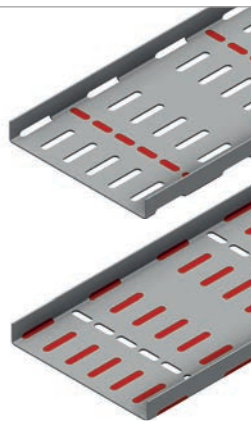
*Only available for SPBE-20 and SPB-RF40.

Alternating slot patterns

To ensure full flexibility to install all types of Tubing Clamps and other equipment.

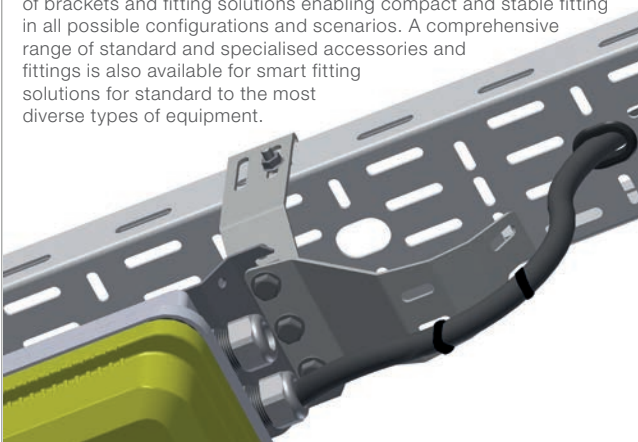
Lateral slots

Longitudinal slots



Accessories

SPB cable tray products are complemented with a wide selection of brackets and fitting solutions enabling compact and stable fitting in all possible configurations and scenarios. A comprehensive range of standard and specialised accessories and fittings is also available for smart fitting solutions for standard to the most diverse types of equipment.



CERTIFICATES



Contents

SPB Cable Tray System

SPBE-20 Cable Tray System

- 136 SPBE-20 Cable Tray System
- 136 SPBE-20 Fittings
- 138 SPBE-20 Fixings

SPBE-40/SPB-RF-40 Cable Tray System

- 139 SPBE-40/SPB-RF-40 Cable Tray System
- 139 SPB-RF-40/SPBE-40 Fittings
- 142 SPBE-40/SPB-RF-40 Fixings

SPB Accessories and Support

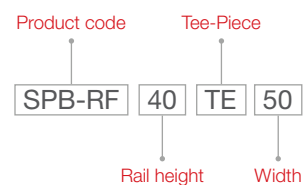
- 144 SPB Accessories
- 146 SPB Support



Intellectual Property Rights

Please note that several of the products presented in this catalogue are protected by our intellectual property rights in the form of patents, registered designs and trademarks, and that we have made the strategic decision to police and enforce these rights in all relevant jurisdictions.

HOW TO READ TYPE DESCRIPTIONS



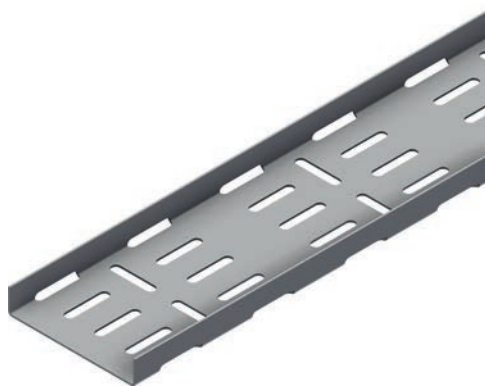
TE = Tee-Piece, CR = Combi-Riser, CO = Cover, FR = Flexi Riser

SPBE-20 Cable Tray System

SPBE-20 Cable Tray

Cable Tray for Tubing and Light Electrical support. Compatible with ETIN and INKO tubing clamp ranges.

Type Description	SS	SS (kg)	HDG	PG
SPBE-20-50	1371408	2.8	1371400	1372201
SPBE-20-100	1371409	4.3	1371401	1372203
SPBE-20-150	1371410	5.8	1371402	1372205
SPBE-20-200	1371411	7.3	1371403	1372207
SPBE-20-300	1371412	10.6	1371404	1372209
SPBE-20-400	1371413	13.6	1371405	1372211
SPBE-20-500	1371414	16.7	1371406	1372213
SPBE-20-600	1371415	19.7	1371407	1372215



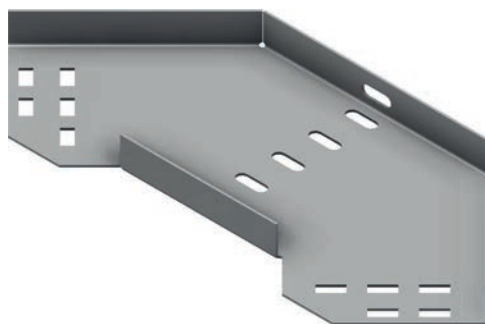
SPBE-20 Fittings

90° Flat Elbow

90° Flat Elbow with integrated Splice Connectors.

Type Description	SS	SS (kg)	HDG	HDG (kg)
SPBE-20-90-50	1302018	0.3	1302010	0.3
SPBE-20-90-100	1302019	0.5	1302011	0.5
SPBE-20-90-150	1302020	0.8	1302012	0.8
SPBE-20-90-200	1302021	1.1	1302013	1.2
SPBE-20-90-300	1302022	1.9	1302014	2.0
SPBE-20-90-400	1302023	2.9	1302015	3.1
SPBE-20-90-500	1302024	4.1	1302016	4.4
SPBE-20-90-600	1302025	6.5	1302017	6.9

4 Locking Bolt set(s) M6x12 included.



90° Flat Elbow for Tubing Installation

90° Flat Elbow with integrated Splice Connectors for tubing installations.

Type Description	SS	SS (kg)	HDG	HDG (kg)
SPBE20 BE-TI-50	1371835	0.1	1302175	0.1
SPBE20 BE-TI-100	1371836	0.3	1302176	0.4
SPBE20 BE-TI-150	1371837	0.5	1302177	0.7
SPBE20 BE-TI-200	1371838	0.8	1302178	1.1

2 Locking Bolt set(s) M6x12 included.

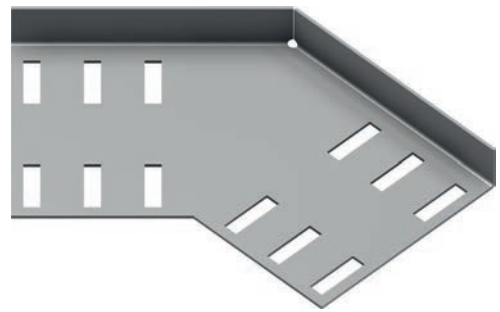


45° Flat Elbow

45° Flat Elbow with integrated Splice Connectors.

Type Description	SS	SS (kg)	HDG	HDG (kg)
SPBE-20-45-50	1302034	0.1	1302026	0.1
SPBE-20-45-100	1302035	0.3	1302027	0.3
SPBE-20-45-150	1302036	0.4	1302028	0.4
SPBE-20-45-200	1302037	0.6	1302029	0.6

4 Locking Bolt set(s) M6x12 included.

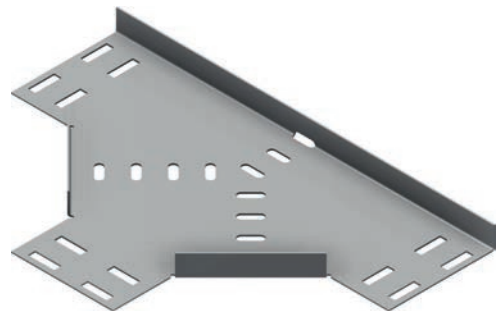


Tee-Piece

Tee-Piece with integrated Splice Connectors.

Type Description	SS	SS (kg)	HDG	HDG (kg)
SPBE-20 TE-50	1302123	0.4	1302115	0.5
SPBE-20 TE-100	1302124	0.8	1302116	0.9
SPBE-20 TE-150	1302125	1.1	1302117	1.3
SPBE-20 TE-200	1302126	1.6	1302118	2.0
SPBE-20 TE-300	1302127	2.7	1302119	3.2
SPBE-20 TE-400	1302128	4.0	1302120	5.0
SPBE-20 TE-500	1302129	5.5	1302121	7.4
SPBE-20 TE-600	1302130	7.3	1302122	9.7

6 Locking Bolt set(s) M6x12 included.



Flexi Riser

0 to 90° Flexi Riser with integrated Splice Connectors. Can be used as inside or outside riser.

Type Description	SS	SS (kg)	HDG	HDG (kg)
SPBE-20 FR-50	1302093	0.3	1302085	0.3
SPBE-20FR-100	1302094	0.5	1302086	0.5
SPBE-20FR-150	1302095	0.6	1302087	0.7
SPBE-20FR-200	1302096	0.8	1302088	0.8
SPBE-20FR-300	1302097	1.1	1302089	1.2
SPBE-20FR-400	1302098	1.4	1302090	1.5
SPBE-20FR-500	1302099	1.7	1302091	1.8
SPBE-20FR-600	1302100	2.0	1302092	2.2



Riser Lock

Riser Lock used to reinforce the SPB Flexi Riser.

Type Description	Fasteners included	SS	SS (kg)	HDG
SPB RL-20	2xM6	1302111	0.03	1302110



SPBE-20 Fixings

Splice Connector for 50 mm width

U-shaped Splice Connector for 50 mm wide SPB-20 Cable Trays.

Type Description	Fasteners included	SS	SS (kg)	HDG
SPB SC-50	2×M6	1371812	0.2	1302166



Splice Connector

Splice Connector to be fitted outside the Cable Tray rail. Two Splice Connectors required for each connection. Not suitable for 50 mm wide trays.

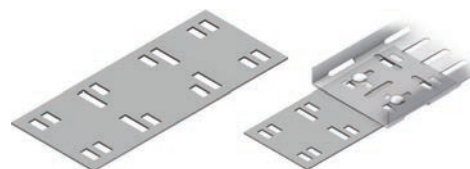
Type Description	Fasteners included	SS	SS (kg)	HDG
SPBE-20 SC	2×M6	1371807	0.1	1371805



Splice Plate

Splice Plate to reinforce the standard splice for wide/heavy load Cable Tray. Recommended for widths over 300 mm.

Type Description	Fasteners included	SS	SS (kg)	HDG
SPB SC 85x200	4×M6	1371813	0.2	1302167



Exit Plate

To protect cables exiting the Tray. Can be used both on end of Cable Trays or on side rails at any position.

Type Description	Fasteners included	SS	SS (kg)	HDG
A-SPBE-20 EX	2×M6	1302160	0.2	1302158

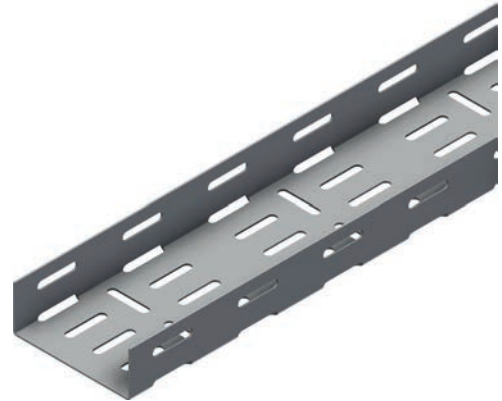


SPBE-40/SPB-RF-40 Cable Tray System

SPBE-40 Cable Tray

Cable Tray for Tubing, Electrical and Instrumentation installations. Compatible with ETIN and INKO tubing clamp ranges.

Type Description	SS	SS (kg)	HDG	HDG (kg)
SPBE-40-50	1371745	4.0	1371740	4.3
SPBE-40-100	1371746	5.5	1371741	5.9
SPBE-40-150	1371747	7.0	1371742	9.8
SPBE-40-200	1371748	8.5	1371743	11.9
SPBE-40-300	1371749	12.6	1302008	17.5
SPBE-40-400	1371750	15.8	1302009	22.5



SPB-RF-40 Cable Tray

Cable Tray with return flange suitable for Electrical and Instrumentation installations. Also compatible with ETIN and INKO tubing clamp ranges.

Type Description	SS	SS (kg)	HDG	HDG (kg)
SPB-RF-40-50	1371751	5.3	1302000	5.3
SPB-RF-40-100	1371752	6.4	1302001	6.8
SPB-RF-40-150	1371753	7.8	1302002	8.4
SPB-RF-40-200	1371754	9.2	1302003	9.9
SPB-RF-40-300	1371755	13.7	1302004	19.5
SPB-RF-40-400	1371756	17.0	1302005	23.6
SPB-RF-40-500	1371757	20.5	1302006	28.5
SPB-RF-40-600	1371758	23.4	1302007	33.4



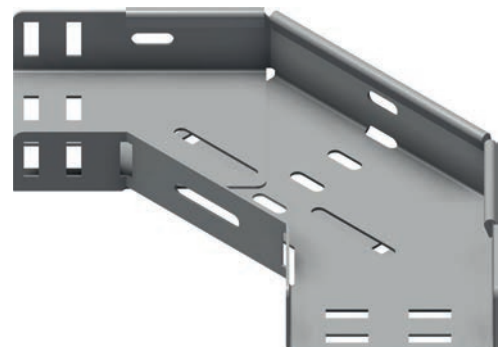
SPB-RF-40/SPBE-40 Fittings

Elbow Flexi

Flexible Flat Elbow that can be adjusted to any required angle from 30 to 90°.

Type Description	SS	SS (kg)	HDG	HDG (kg)
SPB-RF-EF-50	1302079	0.4	1302075	0.4
SPB-RF-EF-100	1302080	0.7	1302076	0.8
SPB-RF-EF-150	1302081	1.3	1302077	1.4
SPB-RF-EF-200	1302082	2.0	1302078	2.2

8 Locking Bolt set(s) M6x12 included.

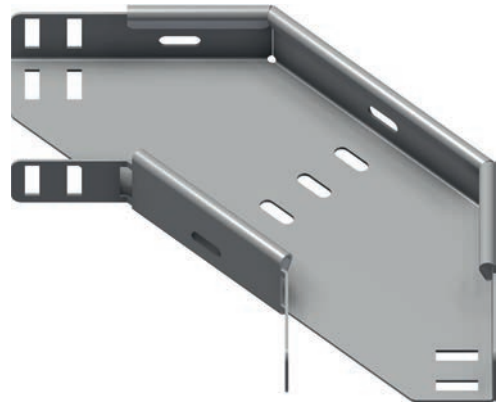


90° Flat Elbow

90° Flat Elbow with integrated Splice Connectors.

Type Description	SS	SS (kg)	HDG	HDG (kg)
SPB-RF-40-90-50	1371760	0.4	1302045	0.4
SPB-RF-40-90-100	1371761	0.7	1302046	0.8
SPB-RF-40-90-150	1371762	1.0	1302047	1.0
SPB-RF-40-90-200	1371763	1.3	1302048	1.4
SPB-RF-40-90-300	1371764	2.2	1302049	2.3
SPB-RF-40-90-400	1371765	3.2	1302050	3.5
SPB-RF-40-90-500	79036	4.5	1302051	4.8
SPB-RF-40-90-600	79037	5.9	1302052	6.3

4 Locking Bolt set(s) M6x12 included.

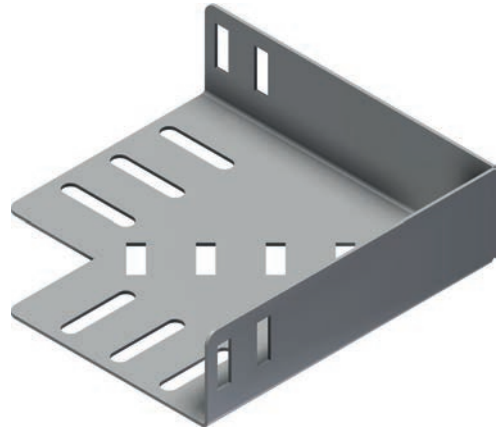


90° Flat Elbow for Tubing Installation

90° Flat Elbow for Tubing Installations with integrated Splice Connectors.

Type Description	SS	SS (kg)	HDG	HDG (kg)
SPBE-40 BE-TI-50	1371840	0.2	1302180	0.2
SPBE-40 BE-TI-100	1371841	0.3	1302181	0.4
SPBE-40 BE-TI-150	1371842	0.6	1302182	0.6
SPBE-40 BE-TI-200	1371843	0.9	1302183	1.3

2 Locking Bolt set(s) M6x12 included.

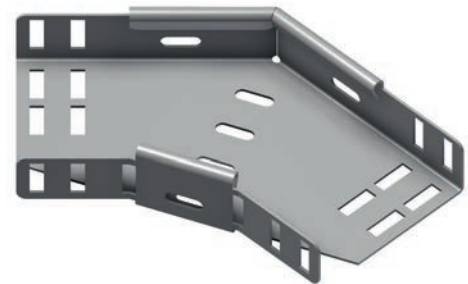


45° Flat Elbow

45° Flat Elbow with integrated Splice Connectors.

Type Description	SS	SS (kg)	HDG	HDG (kg)
SPB-RF-40-45-50	1371766	0.3	1302055	0.3
SPB-RF-40-45-100	1371767	0.4	1302056	0.5
SPB-RF-40-45-150	1371768	0.6	1302057	0.7
SPB-RF-40-45-200	1371769	0.8	1302058	0.9
SPB-RF-40-45-300	1371770	1.3	1302059	1.4
SPB-RF-40-45-400	1371771	1.9	1302060	2.0

4 Locking Bolt set(s) M6x12 included.

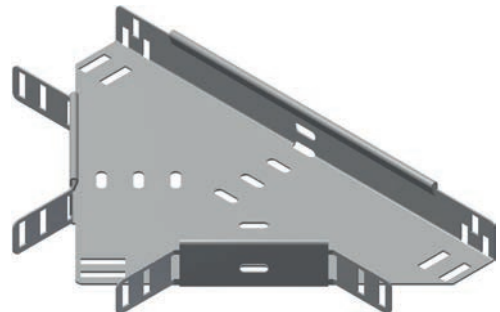


Tee-Piece

Tee-Piece with integrated Splice Connectors.

Type Description	SS	SS (kg)	HDG	HDG (kg)
SPB-RF40 TE-50	1371785	0.6	1302065	0.7
SPB-RF40 TE-100	1371786	0.9	1302066	1.0
SPB-RF40 TE-150	1371787	1.4	1302067	1.5
SPB-RF40 TE-200	1371788	1.8	1302068	1.9
SPB-RF40 TE-300	1371789	2.9	1302069	3.1
SPB-RF40 TE-400	1371790	4.2	1302070	4.5
SPB-RF40 TE-500	1302073	5.7	1302071	4.3
SPB-RF40 TE-600	1302074	7.2	1302072	4.7

6 Locking Bolt set(s) M6x12 included.



Combi Riser

90° Combi Riser with integrated splice connectors. The rung can be turned 180° to change from inside to outside riser. Can be easily cut to form two 45° risers.

Type Description	SS	SS (kg)	HDG	HDG (kg)
SPB CR-50	1302139	0.4	1302131	0.4
SPB CR-100	1302140	0.4	1302132	0.5
SPB CR-150	1302141	0.5	1302133	0.5
SPB CR-200	1302142	0.5	1302134	0.5
SPB CR-300	1302143	0.5	1302135	0.6
SPB CR-400	1302144	0.6	1302136	0.6
SPB CR-500	1302145	0.6	1302137	0.6
SPB CR-600	1302146	0.6	1302138	0.7

6 Locking Bolt set(s) M6x12 included.



Flexi Riser

Flexi Riser with integrated Splice Connectors for 0 to 90°. Can be used as inside or outside riser.

Type Description	SS	SS (kg)	HDG	HDG (kg)
SPB-RF FR-50	1371775	0.4	1302101	0.4
SPB-RF FR-100	1371776	0.5	1302102	0.6
SPB-RF FR-150	1371777	0.7	1302103	0.7
SPB-RF FR-200	1371778	0.8	1302104	0.9
SPB-RF FR-300	1371779	1.1	1302105	1.2
SPB-RF FR-400	1371780	1.5	1302106	1.6
SPB-RF FR-500	1371781	1.8	1302107	1.9
SPB-RF FR-600	1371782	2.1	1302108	2.3



Riser Lock

Riser Lock used to reinforce the SPB Flexi Riser.

Type Description	Fasteners included	SS	SS (kg)	HDG
SPB RL-40	2xM6	1371783	0.05	1302109



Reducer

Part for reducing or increasing Cable Tray width in set increments. Universal design which can be used for left or right side independently, or both sides together.

Type Description	SS	SS (kg)	HDG	HDG (kg)
SPB RE-50	86133	0.1	86130	0.1
SPB RE-100	86134	0.1	86131	0.1
SPB RE-200	86135	0.2	86132	0.2



SPBE-40/SPB-RF-40 Fixings

Splice Connector for 50 mm width

U-shaped Splice Connector for 50 mm wide SPB-40 Cable Trays.

Type Description	Fasteners included	SS	SS (kg)	HDG
SPB SC-50	2×M6	1371812	0.2	1302166



Splice Connector Inside

Splice Connector for fitting inside Cable Trays. With notches to strengthen the connection. Two Splice Connectors required for each connection. Recommended splice for Trays in SS.

Type Description	Fasteners included	SS	SS (kg)	HDG
SPB-40 SC-IN	2×M6	1371808	0.2	



Splice Connector Outside

Splice Connector for fitting outside Cable Trays. Two Splice Connectors required for each connection.

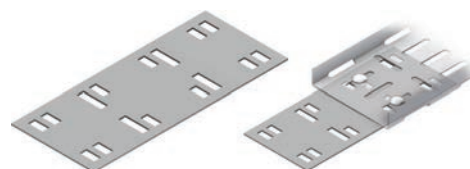
Type Description	Fasteners included	SS	SS (kg)	HDG
SPB-40 SC-OU	2×M6	77516	0.2	1371806



Splice Plate

Splice Plate to reinforce the standard splice for wide/heavy load Cable Tray. Recommended for widths over 300 mm.

Type Description	Fasteners included	SS	SS (kg)	HDG
SPB SC 85x200	4×M6	1371813	0.2	1302167



Hinge Vertical

Vertical Hinge for creating risers at any angle. Can be used for straight runs or bent to 90° to create Tee-risers. Two hinges required for each connection.

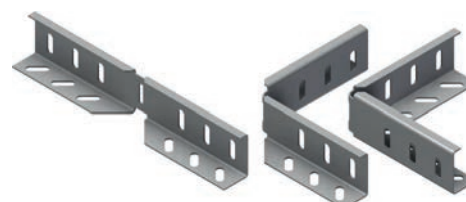
Type Description	Fasteners included	SS	SS (kg)	HDG
SPB HV	2×M6	1371814	0.1	1302169



Hinge Horizontal

Horizontal Hinge which can be adjusted to required angle. Two hinges required for each connection.

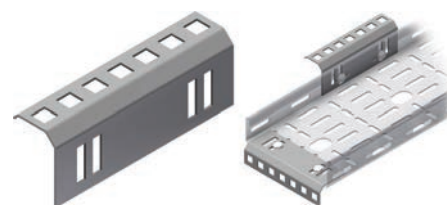
Type Description	Fasteners included	SS	SS (kg)	HDG
SPB-RF40 HH	4×M6	1371811	0.2	1371810



Exit Plate

To protect cables exiting the tray. Can be used both on end of Cable Trays or on side rails at any position.

Type Description	Fasteners included	SS	SS (kg)	HDG
A-SPBE-40 EX	2×M6	1302161	0.1	1302159



Tubing Angle for SPBE-40

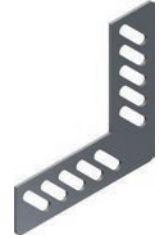
Angle bracket for forming Horizontal Tee-junctions or other angle junctions between two Cable Trays. Particularly useful for tubing installations. Two Tubing Angles are required for each connection.



Type Description	Fasteners included	SS	SS (kg)	HDG
SPBE40 AS-HO	-	1371815	-	1302168

Vertical Tubing Angle for SPBE-40

Angle riser bracket for forming vertical 90° Tee-junctions between two Cable Trays. Particularly useful for tubing installations. Two Tubing Angles are required for each connection.



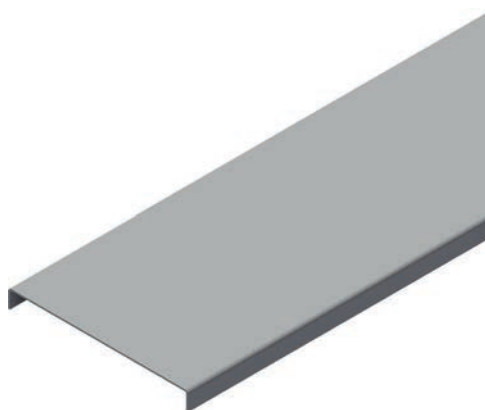
Type Description	Fasteners included	SS	SS (kg)	HDG
SPBE40 AS-VE	2xM6	1371845	0.09	1302185

SPB Accessories

Cover

Straight Flat Cover for the SPB Cable Tray System. 3 m length.

Type Description	SS	SS (kg)	HDG	HDG (kg)
SPB CO-50	1302603	1.8	1302600	2.9
SPB CO-100	1302604	3.0	1302601	4.8
SPB CO-150	1302605	4.2	1302602	6.6
SPB/LOE CO-200	1302606	8.2	1371563	11.4
SPB/LOE CO-300	1302607	11.8	1371564	16.5
SPB/LOE CO-400	1302608	15.4	1371565	21.5
SPB/LOE CO-500	1302609	19.0	1371567	26.6
SPB/LOE CO-600	1302610	22.6	1371568	31.6

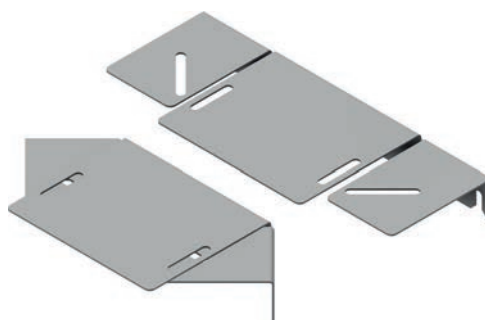


Cover Elbow Flexi

Flat Cover for Flexi Elbow.

Type Description	SS	SS (kg)	HDG	HDG (kg)
SPB EF-CO-50	82649	0.2	82645	0.3
SPB EF-CO-100	81657	0.4	81656	0.5
SPB EF-CO-150	82650	1.2	82646	1.3
SPB EF-CO-200	82651	1.7	82647	1.8

5 Locking Bolt set(s) M6x12 included.



90° Cover

Flat Cover for SPB 90° Flat Elbow.

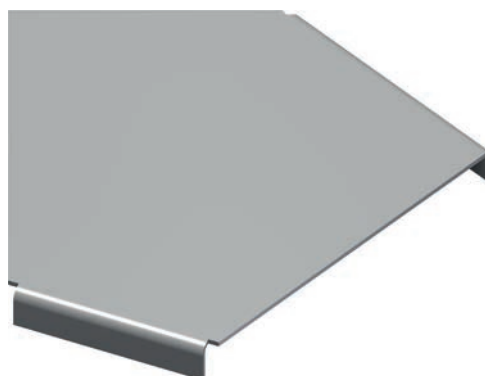
Type Description	SS	SS (kg)	HDG	HDG (kg)
SPB-90-50 CO	79185	0.2	79179	0.2
SPB-90-100 CO	1302613	0.9	79180	0.3
SPB-90-150 CO	79187	0.5	79181	0.5
SPB-90-200 CO	1302615	1.4	79182	0.7
SPB-90-300 CO	79189	1.5	79183	1.5
SPB-90-400 CO	79190	2.3	79184	2.3



45° Cover

Flat Cover for SPB 45° Flat Elbow.

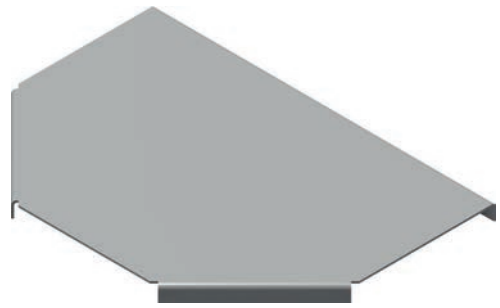
Type Description	SS	SS (kg)	HDG	HDG (kg)
SPB-45-50 CO	79209	0.07	79203	0.08
SPB-45-100 CO	79210	0.2	79204	0.2
SPB-45-150 CO	79211	0.3	79205	0.3
SPB-45-200 CO	79212	0.4	79206	0.4
SPB-45-300 CO	79213	0.7	79207	0.8
SPB-45-400 CO	79214	1.2	79208	1.2



Tee Cover

Flat Cover for SPB Tee-Piece.

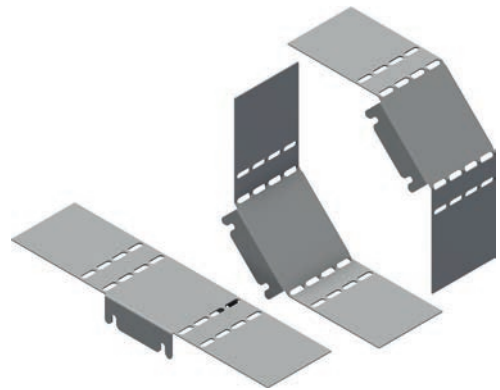
Type Description	SS	SS (kg)	HDG	HDG (kg)
SPB TE-CO-50	79197	0.3	79191	0.3
SPB TE-CO-100	79198	0.5	79192	0.6
SPB TE-CO-150	79199	0.8	79193	0.9
SPB TE-CO-200	79200	1.2	79194	1.2
SPB TE-CO-300	79201	2.1	79195	2.2
SPB TE-CO-400	79202	3.2	79196	3.4



Cover Flexi Riser

Flat Cover for SPB Flexi Riser.

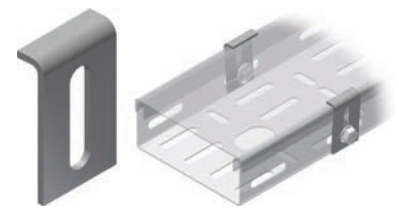
Type Description	SS	SS (kg)	HDG	HDG (kg)
SPB FR-CO-50	81887	0.3	82653	0.3
SPB FR-CO-100	81888	0.5	82654	0.5
SPB FR-CO-150	81889	0.8	82655	0.8
SPB FR-CO-200	81890	1.0	82656	1.0
SPB FR-CO-300	82659	1.4	82657	1.5
SPB FR-CO-400	82660	1.9	82658	2.0
SPB FR-CO-500	82663	2.3	82661	2.5
SPB FR-CO-600	82664	2.8	82662	3.0



Cover Clamp

Cover Clamp for the SPB Cable Tray System.

Type Description	Fasteners included	SS	SS (kg)	HDG
SPBE CC	1×M6	1302611	0.03	1372669



Raised Cover Clamp

Raised Cover Clamp for ventilation. For SPB Cable Tray System.

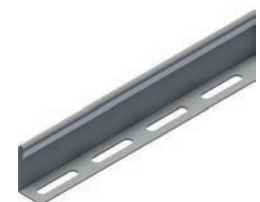
Type Description	Fasteners included	SS	SS (kg)
SPB-RF/LOE-55 CC-V	2×M6	70001	0.06



Divider

Divider for separation and segregation of different systems.

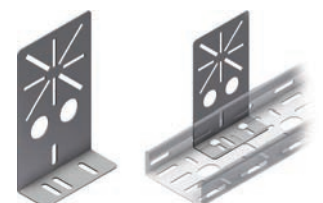
Type Description	Fasteners included	SS	SS (kg)	HDG	Duplex
SPB DI-38	3×M6	88077	1.9	88078	88079



Socket Bracket

Socket Bracket for Junction Box.

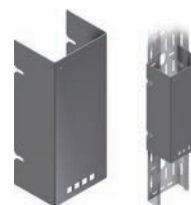
Type Description	Fasteners included	SS	SS (kg)	HDG
A-SPB SO	2×M6	1302156	0.2	1372055



Socket Plate

Socket Plate for 100 mm wide Cable Trays.

Type Description	Fasteners included	SS	SS (kg)	HDG
A-SPB SO-100	4xM6	1302689	0.8	1302688



Edge Protector

To protect cables from sharp edges. 50 m spool.

Type Description	SS	SS (kg/m)	CS
A-SPB EP	1302171	0.1	1302165



Cable Protector

For routing cables safely through holes in SPB-RF Cable Trays in widths 50 - 200 mm. Flame retardant.

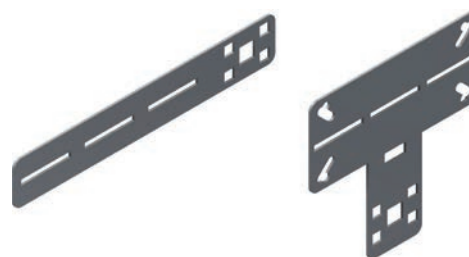
Type Description	Silicone	Silicone (kg)
A-SPB EP	1371855	0.003



Tag Plate

Standard support plate for TAG-No. on Cable Ladders and Cable Trays.

Type Description	Fasteners included	SS	SS (kg)	HDG
TAG 12	2xM6	1302163	0.1	1302162
TAG 14	2xM6	1302588	0.2	

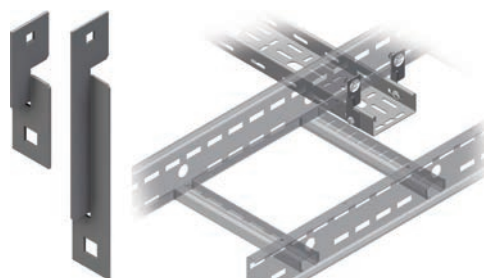


SPB Support

Twisted Transition Bracket SPB-OE

Bracket for supporting SPB Cable Tray either above or below OE Cable Ladders when crossing on different levels. Available in two lengths.

Type Description	SS	SS (kg)	HDG
A-OE/SPB-RF-IF-97	85082	0.04	84176
A-OE/SPB-RF-IF-177	60381	0.06	



Universal Transition Bracket SPB-OE

For attaching SPB Cable Tray to OE100 Cable Ladder side rails vertically or horizontally.

Type Description	Fasteners included	SS	SS (kg)	HDG
A-OE/SPB IF-VE	2xM6/2xM10	1371847	0.2	1302186



Rail Bracket Horizontal Transition SPB-OE

Transition support bracket for fixing SPB Cable Trays to the side rails of OE Cable Ladders.

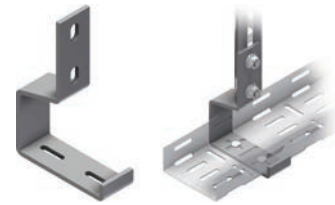
Type Description	Fasteners included	SS	SS (kg)	HDG
A-OE/SPB IF-HO	2xM6/2xM10	1302196	0.2	1302195



Channel Bracket

Channel Bracket typically used with Mekano CH 50-2T.

Type Description	Fasteners included	SS	SS (kg)	HDG
S-SPB CB-100	1×M6/1×M10	1302218	0.6	1302216



Cantilever Arm for Vertical Channel

Cantilever arm for supporting 100 mm wide SPB Cable Tray. Typically used with Mekano CH 50-2T or directly from wall or Cable Ladders.

Type Description	SS	SS (kg)
S-SPB CA-100	1302323	0.5



Universal Support Bracket

Versatile Support Bracket for SPB Cable Trays, suitable for installation on stringers or from threaded rod. It is also suitable for fixing directly onto ceiling, walls and floors.

Type Description	SS	SS (kg)
S-SPB SB STUD-23	1372903	0.2



Twisted Channel Bracket

Space-saving Support Bracket for installation from the centre of 100-150 mm wide SPB Cable Trays.

Type Description	Fasteners included	SS	SS (kg)	HDG
S-SPB CB-TW	2×M6/2×M10	1371818	0.3	1302172

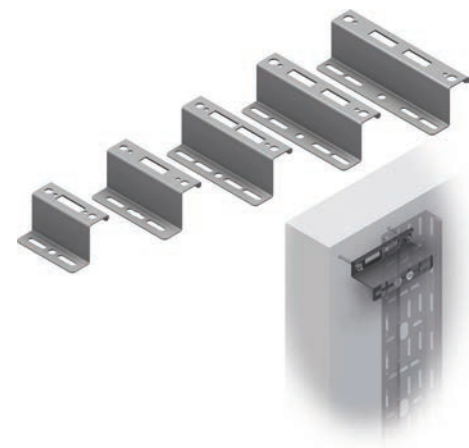


Wall Support Bracket

Support Bracket for Cable Trays suitable for direct fixing to wall, ceiling or floor, or bolting to a Square or Rectangular Hollow Section (SHS/RHS) using U-Bolts.

Type Description	SS	SS (kg)	HDG	HDG (kg)
S-SPB SB-85-SHS-50	1371795	0.1	1302150	0.1
S-SPB SB-111-SHS-80	1371800	0.2	1302154	0.2
S-SPB SB-135-SHS-100	1371796	0.2	1302151	0.2
S-SPB SB-155-SHS-120	1371797	0.2	1302152	0.2
S-SPB SB-175-SHS-140	1371798	0.2	1302153	0.2

2 Locking Bolt set(s) M6x12 included.



Square U-Bolts

Square U-Bolts in various sizes, complete with self locking flange nuts.

Type Description	SS	SS (kg)
S-M UB-SQ-M8-SHS-50	1372590	0.08
S-M UB-SQ-M8-SHS-80	1372591	0.1
S-M UB-SQ-M8-SHS-100	1372592	0.2
S-M UB-SQ-M10-SHS-120	1372593	0.3
S-M UB-SQ-M10-SHS-140	1372594	0.3

